



DHS USER'S GUIDE FOR QUESTIONNAIRES IN EXCEL

402	BIRTH HISTORY NUMBER	LAST BIRTH	NEXT TO LAST BIRTH	SECOND-FROM-LAST BIRTH HISTORY NUMBER
<h2>Demographic and Health Surveys Methodology</h2>				BIRTH HISTORY NUMBER <input type="text"/> <input type="text"/> NAME _____ LIVING <input type="checkbox"/> DEAD <input type="checkbox"/>
405	When you got pregnant with (NAME), did you want to get pregnant at that time?	YES 1 (SKIP TO 408) ← NO 2	YES 1 (SKIP TO 430) ← NO 2	YES 1 (SKIP TO 430) ← NO 2
406	Did you want to have a baby later on, or did you not want any (more) children?	LATER 1 NO MORE 2 (SKIP TO 408) ←	LATER 1 NO MORE 2 (SKIP TO 430) ←	LATER 1 NO MORE 2 (SKIP TO 430) ←
407	How much longer did you want to wait?	MONTHS ..1 <input type="text"/> <input type="text"/> YEARS ..2 <input type="text"/> <input type="text"/> DON'T KNOW ... 998	MONTHS ..1 <input type="text"/> <input type="text"/> YEARS ..2 <input type="text"/> <input type="text"/> DON'T KNOW ... 998	MONTHS ..1 <input type="text"/> <input type="text"/> YEARS ..2 <input type="text"/> <input type="text"/> DON'T KNOW ... 998
408	Did you see anyone for antenatal care for this pregnancy?	YES 1 NO 2 (SKIP TO 415) ←		
409	Whom did you see? (2) Anyone else?	HEALTH PERSONNEL DOCTOR A NURSE/MIDWIFE B		

This document is part of the Demographic and Health Survey's *DHS Toolkit* of methodology for the MEASURE DHS Phase III project, implemented from 2008-2013.

This publication was produced for review by the United States Agency for International Development (USAID). It was prepared by MEASURE DHS/ICF International.





EXCEL DHS QUESTIONNAIRE USER'S GUIDE

Kathryn Senzee

**Demographic and Health Surveys
ICF Macro
Calverton, Maryland
USA**

February 2004

Excel DHS Questionnaire User's Guide

Contents

Introduction to Excel.....	1
Questionnaire structure.....	1
Adding new questions.....	3
Deleting questions	4
Editing a question.....	5
Displaying numbers as text.....	6
Dot leaders.....	7
Making global changes	8
Toolkit	8
Skip arrows and boxes.....	9
Printing	9
Tips	11

How to...

Add a new question	3
Copy an entire section (worksheet) of the questionnaire.....	11
Change the text in a question	6
Draw lines around questions.....	2
Create new skip arrows and filter boxes.....	9
Delete a question	4
Make a question longer by adding a row	4

What to do if...

A line of text is cut off on screen	6
A line of text is cut off when printing but looks fine on screen.....	10
You typed in "01" and Excel changed it to "1"	7
You don't see any solid blue lines.....	3
You see only one section of the questionnaire	2
The line underneath a question shows on screen but doesn't print.....	10
The number you typed in displays as "#"	6
The page prints out too small, with very small text, boxes, and arrows.....	10

Introduction to Excel

An Excel worksheet is a grid with columns and rows. The boxes with light gray outlines where the columns and rows intersect are called cells. Every piece of text in the questionnaire is contained in its own cell. To select a cell, click on it once. You can then cut, copy, paste, or delete the contents of the cell. To replace the text in a cell, just click on it once to select it, then start typing. Press Enter when you're finished. The new text you typed will replace the old text. To select more than one cell at a time, click and drag over the cells you want to select to highlight them.

Each column has a letter directly above it. To select a column, click on the letter at the top of the column. Rows are designated by numbers to their left. To select a row, click on the number to the left of the row. To select all the cells in the Excel worksheet, click on the gray space above row 1 and to the left of column A.

Questionnaire structure

If you've used Excel before, you'll notice the layout of the questionnaire is somewhat unusual, especially the column width and row height. Excel is being used here as a kind of virtual graph paper. The text in the questionnaire is contained in the cells, or the boxes of the virtual graph paper. For instance, in Figure 1, Cell E6 contains the text "Now I would like to ask about all the births you have had during". Cell E7 directly below it contains the text "your life. Have you ever given birth?" Notice that these lines of text are much too long to fit completely inside their cells. Excel allows text in a cell to overlap the cells to its right, as long as nothing else is contained in the cells being overlapped.

	A	B	C	D	E	F	G	H	I	J	K	L	M	N	O	P	Q	R	S	T	U	V	W	X	Y	Z	A	A	A	A	A	A	A	A
1																																		
2																																		
4		NO.																																
6		201																																
7																																		
10		202																																
11																																		
15																																		
14																																		
15		203																																
16																																		

Figure 1

How to... draw lines around questions

The lines between questions are simply the edges of cells that have a border drawn between them. To draw a border, select the cells to which you want to apply a border, click on the arrow next to the Borders button on the Formatting toolbar (see Figure 2), and choose the border style you want from the pull-down menu. (Note: If you can't see the Borders button, choose Customize from the Tools menu, and on the Options tab, check or uncheck the relevant box to make sure the Standard and Formatting toolbars are displayed on two separate rows.) If you need to use a thicker line (for a filter question) or a dotted line, see the instructions on p. 5 under "Editing a question."

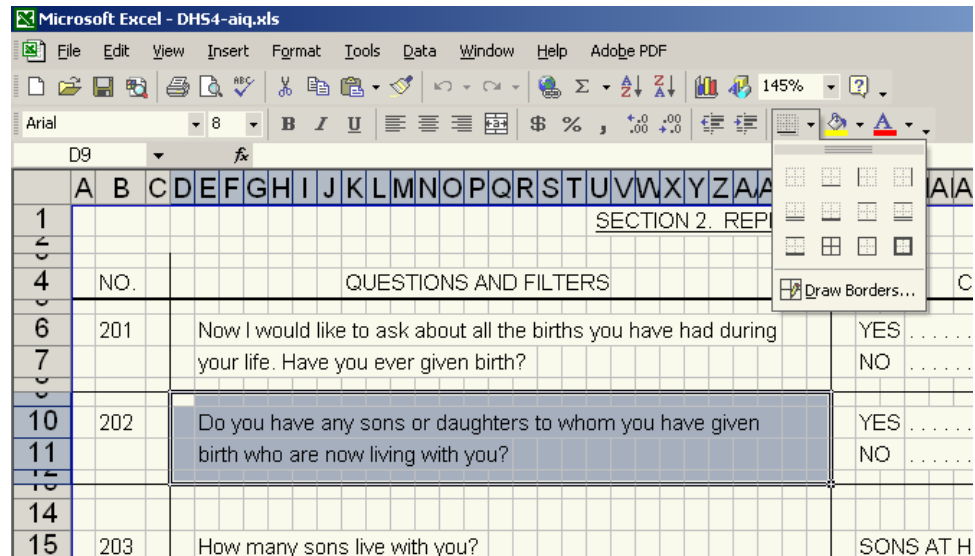


Figure 2

The boxes where interviewers record numbers are also cells with a border assigned to them.

This graph-paper paradigm has several advantages. It allows text to be placed precisely where it is wanted, it eliminates the need for the tables and text boxes used in the Word version of the questionnaire, and it ensures a consistent format, without any of the complicated formatting and instability of tab sets, nested tables and text boxes in Word. One disadvantage of the graph-paper layout is that the gray cell outlines can be distracting. To view the questionnaire without the cell gridlines, choose File > Print Preview.

What to do if... you see only one section of the questionnaire

The questionnaire is made up of several Excel worksheets. In general, there is one section of the questionnaire per sheet. To move between worksheets, click on the tabs near the bottom of the screen (see Figure 3).

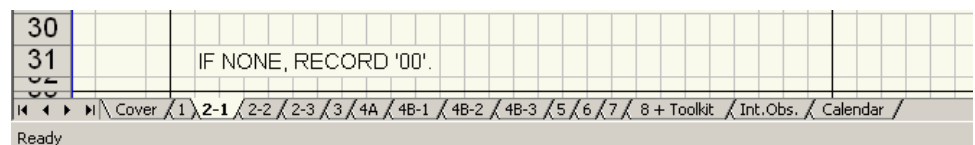


Figure 3

The questionnaires should be viewed in Page Break Preview (View > Page Break Preview). In Page Break Preview, the solid blue lines around the questionnaire indicate page boundaries. Solid lines are manual page breaks. If a dotted line appears, it indicates a soft page break—in other words, where Excel is going to break the page unless a manual page break is inserted above it. All the page breaks in the questionnaire should be manual page breaks; there's no other way to make sure page breaks don't fall in the middle of a question.

To convert a soft (automatic) page break to a manual page break, click on the dotted blue line and drag it up or down.

To move a manual page break, just click on the solid blue line and drag. If you drag it too far, Excel will try to fit too much information on one page, and it will print out too small to read. See p. 10 for information on correcting this problem.

The gray area outside the solid blue lines will not print, which means it's a good place to add comments that aren't meant to print out.

What to do if... you don't see any solid blue lines

Adding new questions

To insert a new question, it's best to copy and paste an existing question. Here's how:

1. Choose a question to copy that's formatted like the question you want to insert. If you want to insert a question with several coding categories, choose a question with several coding categories. If your new question can be answered "yes" or "no," choose a yes/no question to copy.
2. Highlight the rows of the question you're copying (not just the cells) and copy (File > Copy, or Ctrl-C) (see Figure 4).

How to... add a new question

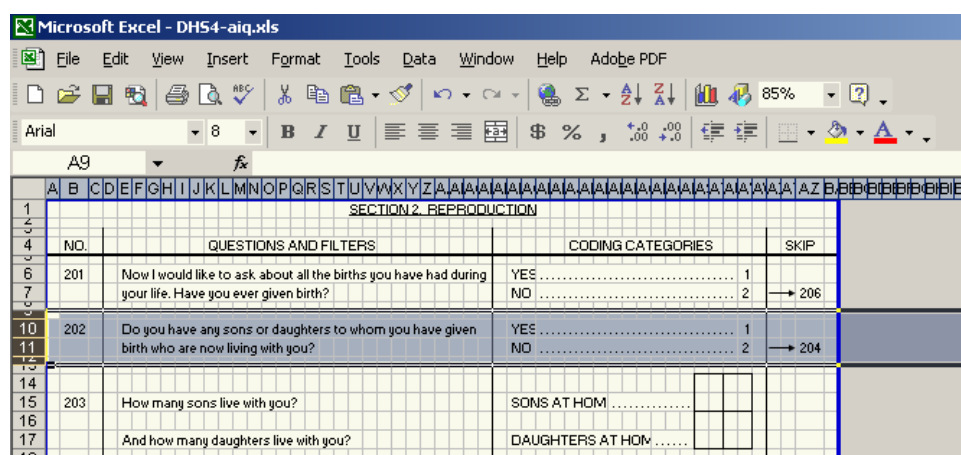


Figure 4

3. Find the question that will come **after** your new question. Select the first row of it by clicking on the number to the left of the row. It should be one of the rows with a very short height. You may need to zoom in (View > Zoom) to see what you're doing.

- Right-click anywhere inside the highlighted row and choose Insert Copied Cells from the menu (see Figure 5).

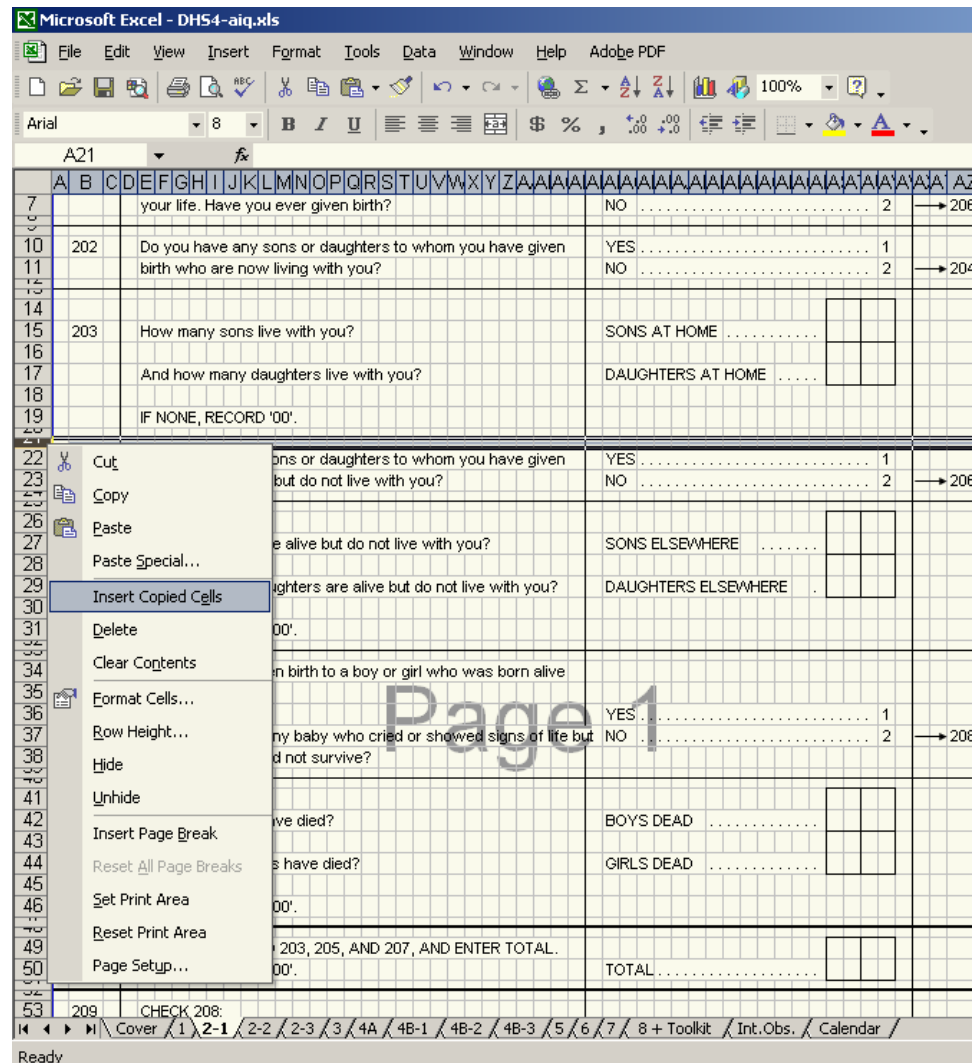


Figure 5

How to... make a question longer by adding a row

- Delete the content of the old question (highlight the cells and press Delete) and type in the new question. If you need to delete a row, select it, right-click, and choose Delete from the menu. To add a new row, select the row below where you want the new row to appear, right-click, and choose Insert from the menu.

Deleting questions

How to... delete a question

To delete a question, select all the rows of the question (not just the cells), right-click on the highlighted rows, and choose Delete from the menu.

If you delete a question with a skip arrow or other shape in it (see p. 9), Excel may not delete the skip arrow or other shape. You'll have to delete it manually. Just click on it and press Delete. If you delete several questions with shapes in

them, there will be several shapes to delete. Keep clicking on them and pressing Delete until they're gone.

Editing a question

As we saw above, the lines between questions are actually cell borders, and one way to add or delete a line is discussed on p. 2. Another way to add or delete a line is to select the cells bordering the line you want to change, click on Format > Cells, and select the Border tab (see Figure 6).

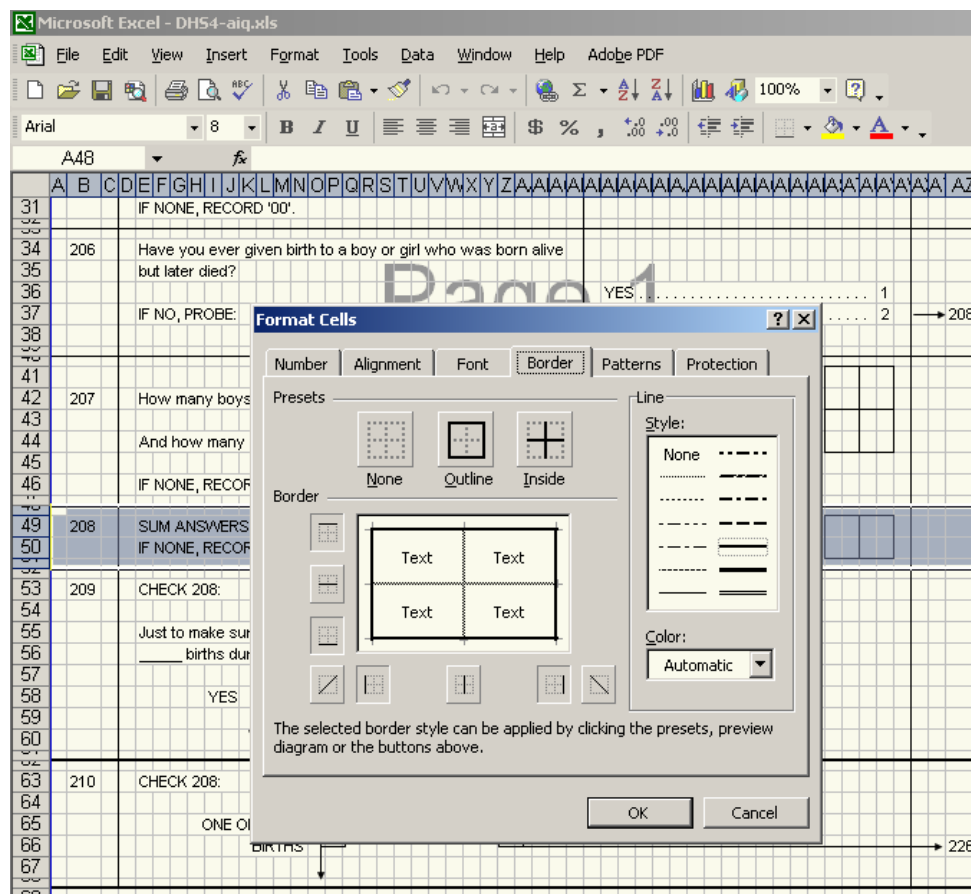


Figure 6

The preview diagram shows what borders are currently applied to the cells you have selected. To remove a border, just click on it in the preview diagram. To add a border, first select the line style and width you want in the Style box to the right of the preview diagram, then click on the preview diagram where you want the border to appear. For the thin lines between questions, use the line style in the bottom left-hand corner of the Style box. For the thick lines around filters, use the line that's highlighted in the Style box in Figure 6 (it's in the right-hand column, third from the bottom).

How to... change the text in a question

To insert text in an empty cell, just select the cell and start typing. To edit text that's already in a cell, select the cell, then press F2. Another way is to select the cell and click inside the formula bar above the column letters.

Often, when you add or delete text from a cell, you'll need to adjust the line breaks. For instance, in Figure 1 on p. 1, Cell E6 contains the text "Now I would like to ask about all the births you have had during". Cell E7 directly below it contains the text "your life. Have you ever given birth?" If you replace the text "you have had during" with the word "in", the first line of text will be too short. Excel doesn't adjust the lines automatically to make up for this, the way Word does; you have to do it manually. Click on cell E7, press F2, highlight the first few words, cut them (Ctrl-X or Edit > Cut), press Enter, click on cell E6, press F2, position the cursor at the end of the line of text, and paste the cut text into the cell.

If you need to completely erase the contents of a cell, it's best to select a blank cell from the gray non-printing area of the worksheet, copy it, select the cell you want to erase, and paste. This ensures that you're deleting all the cell formatting as well as the contents of the cell.

What to do if... a line of text is cut off on screen

As mentioned in the "Questionnaire structure" section, Excel will display text that's too big for the cell it's in, but only if all the cells to its right are empty. If one of the cells that the text is "covering up" has something in it, Excel will display that instead. For example, in Figure 7, the text in row 180 appears to be cut off. This is because cell J180 has a space typed into it. Excel displays the space in cell J180 and cuts off all the text to its left. To solve the problem, simply select the cell where the text ends—J180 in this case—and press Delete.

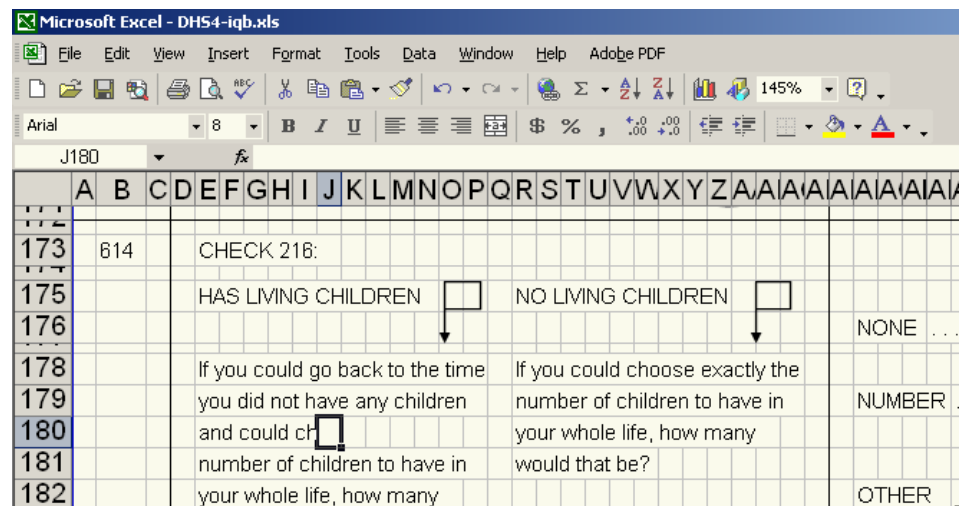


Figure 7

Displaying numbers as text

What to do if... the number you typed in displays as "#"

Sometimes Excel will display "#" instead of a number you've typed in, if the number is too long to display in just one cell (see Figure 8).

DAYS AGO	1			
WEEKS AGO	2			
MONTHS AGO	3			
YEARS AGO	4			
IN MENOPAUSE/ HAS HAD HYSTERECTOMY ...		#		
BEFORE LAST BIRTH	995			
NEVER MENSTRUATED	996			

Figure 8

Another related problem is that Excel will sometimes display “01” as “1”.

There are two ways to keep this from happening. One is to select the cell with the long number in it, go to Format > Cells, and on the Number tab, choose Text from the category list. If the number still displays incorrectly, try retyping it.

The other way is to type an apostrophe in front of the number ('994), which forces Excel to display the number as text.

What to do if... you typed in “01” and Excel changed it to “1”

Dot leaders

The row of dots leading to a category number (called a *dot leader*) is created using only one dot, one space, and a special setting in the Format > Cells dialog box. Here's how to do it:

1. Type “. ” (a period/full stop, followed by a space) in the first empty box to the right of the text (see Figure 9). To avoid problems printing the questionnaire out later, make sure the box you type in isn't overlapping the text to its left at all. For instance, in the second line of the question in Figure 9 (“YES, PIPE”), if the dot were one square to the left, it would only be overlapping a little bit, but on some printers that means the last “E” in “PIPE” would be cut off.

164	496	Do you currently smoke cigarettes or tobacco? (17)	YES, CIGARETTES	A
165			YES, PIPE	B
166		IF YES: What type of tobacco do you smoke?	YES, OTHER TOBACCO	C
167			NO	Y
168		RECORD ALL TYPES MENTIONED.		

Figure 9

2. Select that cell and all the blank cells to its right, up to the coding category itself.

- Go to Format > Cells, click on the Alignment tab, and under “Text alignment”, choose “Fill” from the “Horizontal” drop-down menu (see Figure 10).

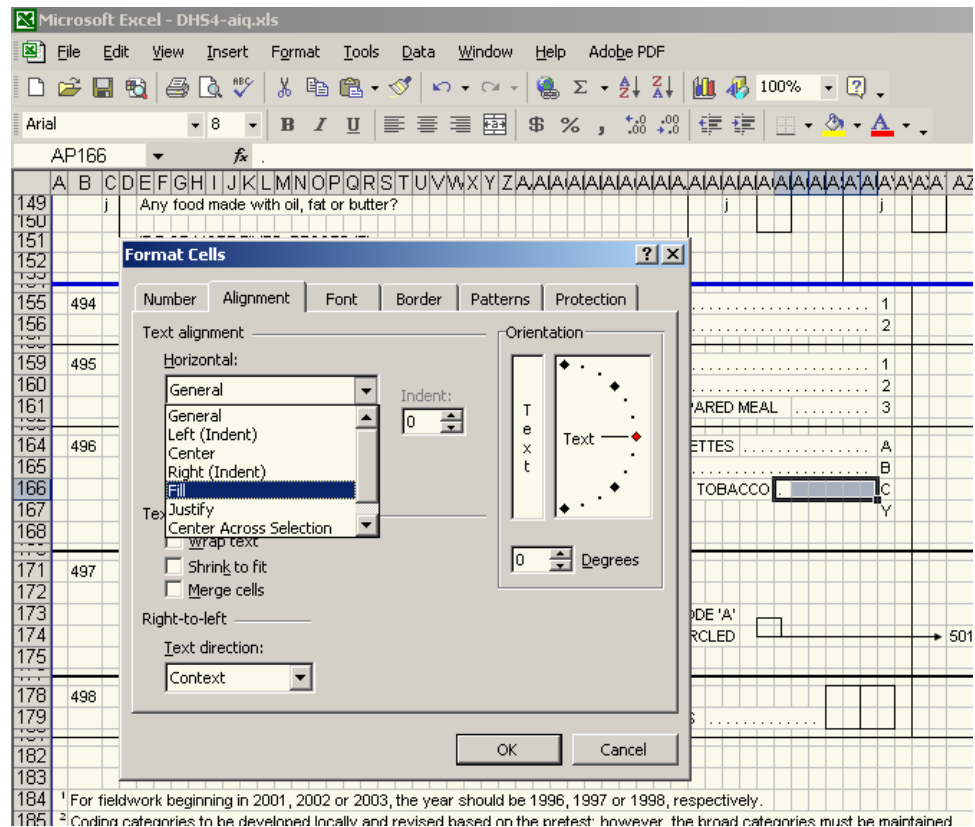


Figure 10

A quicker way to create a dot leader is simply to copy one from elsewhere and paste it into your question. For instance, in Figure 9, the easiest way to create the dot leader would be to copy the first six cells after “YES, PIPE” and paste them into the space after “YES, OTHER TOBACCO”.

Making global changes

To make changes that affect all the worksheets in a document at once—for instance, to change the header or footer for the entire document—right-click on any of the tabs at the bottom of the screen and choose Select All Sheets. Any changes you make now apply to all sheets. This includes changes like deleting cell contents, so be very careful what you do with multiple sheets selected. It’s generally a good idea to save your work before choosing Select All Sheets. When you’ve finished making your changes, right-click on any tab and select Ungroup Sheets from the menu.

Toolkit

After the last section of the questionnaire, there should be a toolkit section in the gray non-printing section at the end. You may find it useful as a source of ques-

tions to copy and paste. It's also a good place to find skip arrows and boxes (see below). You may want to delete it when you've finished developing the questionnaire.

Skip arrows and boxes

The skip arrows and filter boxes are Excel AutoShapes. The AutoShapes are anchored to the cells they're in, so they should move with the question they're attached to when you add or delete questions around them.

Unless you need an entirely new shape, don't create arrows or boxes from scratch. Copy one that looks like what you need and modify it. The easiest way to copy and paste AutoShapes is to select the cells they're on top of, copy the cells, and paste them where you need the new AutoShape.

To modify an existing AutoShape (for instance, to lengthen the arrow that extends from a box), right-click on it and choose Edit Points from the menu. Black squares will appear at the corners of the AutoShape. You can then drag the black squares until you have the shape you want. You may find it useful to hold down the Shift key as you drag the black squares; this will constrain the mouse to horizontal or vertical movement.

Try to avoid changing the shape of an arrow or box by left-clicking on it and dragging the handles that appear around it. This will distort its shape. It's better to right-click, choose Edit Points, and then make the changes you want.

To move an AutoShape, left-click on it to select it, position your cursor on top of it until the cursor changes to a four-arrow shape, then click and drag. You can also use the arrow keys to move an AutoShape when it's selected.

To delete AutoShapes, click on them to select, and press Delete. If you select the cells they're anchored to and delete the cells, the shape usually won't get deleted along with them. Just delete it manually, by clicking on it directly and pressing Delete.

Printing

To print the questionnaire, go to File > Print, and under the "Print what" section, choose "Entire workbook". Then click OK. This will print the entire questionnaire. If you want to print just one section of the questionnaire, you can choose the "Active sheet(s)" button instead, but when you print using this option, the page numbering will be incorrect.

If you need to print just part of the questionnaire with the correct page numbers, go to File > Print, but don't choose the "Active sheet(s)" button. Instead, choose the "Entire workbook" button, then click the "Preview" button directly underneath. Click on the page to zoom in so you can read the page numbers, then use the "Next" and "Previous" buttons to read through the questionnaire and determine which page numbers you wish to print. When you know what pages you need, press the "Close" button. Return to File > Print, choose the "Entire workbook" option, then enter the page numbers you want under "Print range" and click OK.

How to... create new skip arrows and filter boxes

The questionnaires are formatted to fit on A4 paper. If you want to print them on 8½ × 11 paper instead, go to File > Page Setup. Under Scaling, choose the button next to “Adjust to ___% normal size” and type “90” into the box. From the Paper size drop-down menu, choose Letter. Then click OK, and print as you normally would.

What to do if... a line of text is cut off when printing but looks fine on screen

One common printing problem is text getting cut off, especially in the coding categories, where the end of the category can get cut off by the row of dots. To avoid this, leave plenty of space between the end of the text and the beginning of the row of dots (see p. 7 for information on formatting the dots).

If your pages are too big to fit on one sheet, you can adjust the manual page breaks, or experiment in the File > Page Setup dialog box with the “Adjust to ___% normal size” settings. Setting it to 90% or 95% may take care of the problem.

What to do if... the page prints out too small, with very small text, boxes, and arrows

Sometimes the “Adjust to ___% normal size” setting gets set automatically to a small percentage, which makes the page print at a very small size that is hard to read. This often happens when you adjust the manual page breaks (see p. 3 for information on page breaks). To set your page size back to normal, click on the worksheet tab of the affected section, choose File > Page Setup, and set “Adjust to ___% normal size” to 100%. When you return to the worksheet, Excel will have added dotted blue lines, or automatic page breaks, so you can see what size your pages should be. Move the solid blue lines (manual page breaks) so that they match the dotted blue lines as closely as possible without cutting off any of the questions.

What to do if... the line underneath a question shows on screen but doesn't print

Another common printing problem is that the line below a question shows on screen but does not print, as in Figure 11.

NUMBER OF COMPLETED MONTHS.			
233	Have you ever had any other pregnancies that did not result in a live birth?	YES 1 NO 2	→ 237
234	ASK THE DATE AND THE DURATION OF PREGNANCY FOR EACH EARLIER NON-LIVE BIRTH PREGNANCY BACK TO JANUARY 1995. (1) ENTER '1' IN COLUMN 1 OF CALENDAR IN THE MONTH THAT EACH PREGNANCY TERMINATED AND 'P' FOR THE REMAINING NUMBER OF COMPLETED MONTHS.		
235	Did you have any pregnancies that terminated before 1995 (1) that did not result in a live birth?	YES 1 NO 2	→ 237
236	When did the last such pregnancy that terminated before 1995 (1) end?	MONTH YEAR	

Figure 11

If this happens, select the cells above the missing border and choose Format > Cells (Figure 12). The preview diagram will show a border below the cells, even though it isn't printing. Click on the border to remove it, and choose OK. Now open Format > Cells again, and click on the preview diagram to replace the border you just removed. When you print out the questionnaire again, the border should reappear.

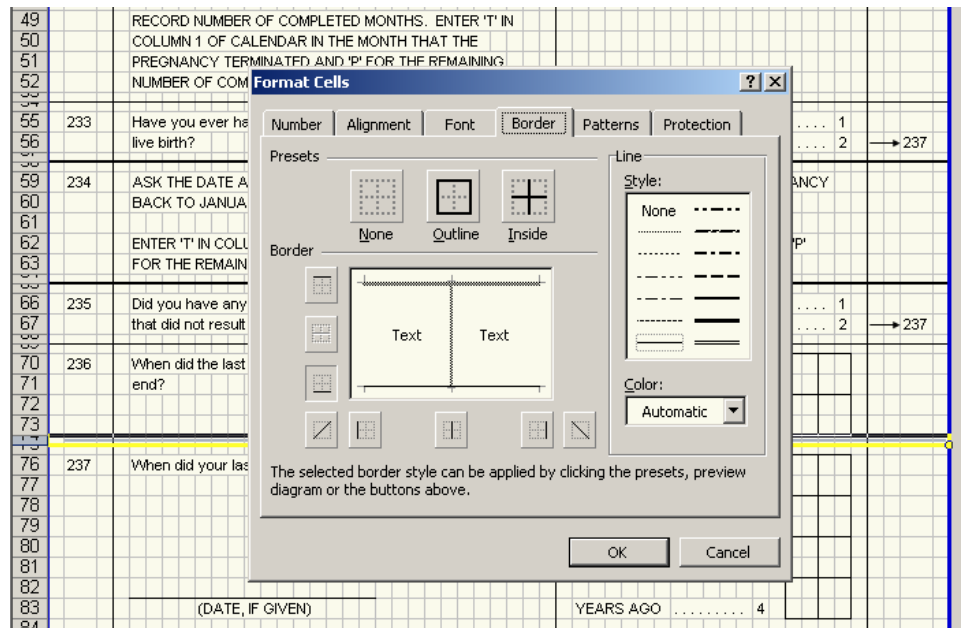


Figure 12

Tips

1. Don't reinvent the wheel. If you need to insert a question, start with an existing question, copy and paste. If you need to insert a new questionnaire section, copy an existing worksheet, paste it, and use it as a template for your new section (right-click on the worksheet tab, choose Move or Copy, check the "Create a copy" box, and click OK). If you need a new skip arrow, look in the toolkit that should be included in the non-printing gray area of the last questionnaire section, or adapt an existing skip arrow. Every time you create something from scratch instead of copying something that's already there, it makes the questionnaire less consistent.
2. Don't change column width. If you change the width of a column, it affects that whole section of the questionnaire. If it's absolutely necessary to change column width (for example, if you need to create a complicated table like the household schedule in the household questionnaire), create a new worksheet for that section and change the width of the columns for just that worksheet.

How to... copy an entire section (worksheet) of the questionnaire

