

**Descriptive Statistics**

	Mean	Std. Deviation(a)	Analysis N(a)	Missing N
if Água canalizada da rede pública	.36	.479	5712	0
if water is Agua de garaffa	.03	.178	5712	0
if gets water from a Chafariz	.37	.483	5712	0
if gets water from Auto-tanque	.04	.192	5712	0
if gets water from Cisterna	.05	.216	5712	0
if gets water from poco	.02	.129	5712	0
if gets water from nascente	.07	.253	5712	0
if gets water from other source	.07	.249	5712	0
if has pvt toilet - com retrete	.45	.498	5712	0
if uses shared toilet - com retrete	.05	.211	5712	0
if has pvt toilet - sem retrete	.03	.180	5712	0
if uses shared toilet - sem retrete	.00	.070	5712	0
if has latrine	.04	.191	5712	0
if uses the bush	.42	.494	5712	0
if household has electricity	.69	.464	5712	0
if household has radio	.78	.413	5712	0
if household has fridge	.50	.500	5712	0
if household has tv	.60	.489	5712	0
if household has dvd	.37	.483	5712	0
if household has car or truck	.09	.288	5712	0
if household has phone	.57	.495	5712	0
number of members per sleeping room	2.43	1.352	5712	0
if uses charcoal for cooking (+12 cases	.34	.475	5712	0
if uses natural gas for cooking (+13 cases	.64	.480	5712	0
if uses other fuel for cooking	.01	.118	5712	0
if roof is made of concrete	.75	.435	5712	0
if roof is made of shingles	.18	.387	5712	0
if roof is made of cement fiber	.03	.168	5712	0
if roof is made of natural materials (straw)	.02	.141	5712	0
if roof is made of tin, cartons, bags	.01	.112	5712	0
if has wall made of loose stone	.05	.220	5712	0
if has wall made of cemented stone	.20	.397	5712	0
if has wall made of cement block	.61	.487	5712	0
if has stone+mud walling	.11	.314	5712	0
if wall made of other materials	.0081	.08939	5712	0
if floor is earth/mud/dung/sand	.0214	.14459	5712	0
if floor is of cement	.7425	.43731	5712	0
if floor is of stone	.0130	.11309	5712	0
if has parquet/polished wood flooring	.0205	.14166	5712	0
if flooring is of mosaic	.1982	.39866	5712	0
a For each variable, missing values are replaced with the variable mean.				

**Component Score Coefficient Matrix**

	Component
	1
if Água canalizada da rede pública	.077
if water is Agua de garaffa	.033
if gets water from a Chafariz	-.050
if gets water from Auto-tanque	.012
if gets water from Cisterna	-.025
if gets water from poco	-.024
if gets water from nascente	-.041
if gets water from other source	-.007
if has pvt toilet - com retrete	.105
if uses shared toilet - com retrete	.017
if has pvt toilet - sem retrete	-.009
if uses shared toilet - sem retrete	-.002
if has latrine	-.012
if uses the bush	-.104
if household has electricity	.108
if household has radio	.063
if household has fridge	.114
if household has tv	.113
if household has dvd	.101
if household has car or truck	.061
if household has phone	.085
number of members per sleeping room	-.045
if uses charcoal for cooking (+12 cases	-.092
if uses natural gas for cooking (+13 cases	.093
if uses other fuel for cooking	-.005
if roof is made of concrete	.059
if roof is made of shingles	-.039
if roof is made of cement fiber	-.024
if roof is made of natural materials (straw)	-.029
if roof is made of tin, cartons, bags	-.021
if has wall made of loose stone	-.034
if has wall made of cemented stone	-.031
if has wall made of cement block	.069
if has stone+mud walling	-.040
if wall made of other materials	-.015
if floor is earth/mud/dung/sand	-.028
if floor is of cement	-.071
if floor is of stone	-.016
if has parquet/polished wood flooring	-.001
if flooring is of mosaic	.093
Extraction Method: Principal Component Analysis. Component Scores.	

Sum over each variable

	If has	If does not have
	0.103448618	-0.056947285
	0.182152608	-0.006131087
	-0.065000936	0.038133883
	0.057822214	-0.002316258
	-0.109237889	0.005630819
	-0.186365825	0.003219499
	-0.149495716	0.011075839
	-0.026267368	0.001866742
	0.115785792	-0.094908201
	0.077771545	-0.00379861
	-0.050812238	0.001757859
	-0.027777569	0.000136835
	-0.062400725	0.002464232
	-0.122209087	0.088493692
	0.073069886	-0.160361428
	0.033570243	-0.11995516
	0.114527523	-0.113807978
	0.09161176	-0.139930883
	0.132010843	-0.077213889
	0.190856779	-0.019196
	0.073278789	-0.098547337
	-0.126855481	0.066267789
	0.069563701	-0.123323609
	-0.042053036	0.000604918
	0.03419227	-0.100780947
	-0.081371519	0.018241451
	-0.141285152	0.004202641
	-0.199561219	0.004136723
	-0.18747016	0.002393236
	-0.148601779	0.008005852
	-0.063310918	0.015476002
	0.055105685	-0.086807604
	-0.113846733	0.014188813
	-0.171162184	0.001389598
	-0.188657422	0.004117389
	-0.041679047	0.120163724
	-0.136899107	0.001796831
	-0.007950176	0.00016625
	0.187200848	-0.046268856

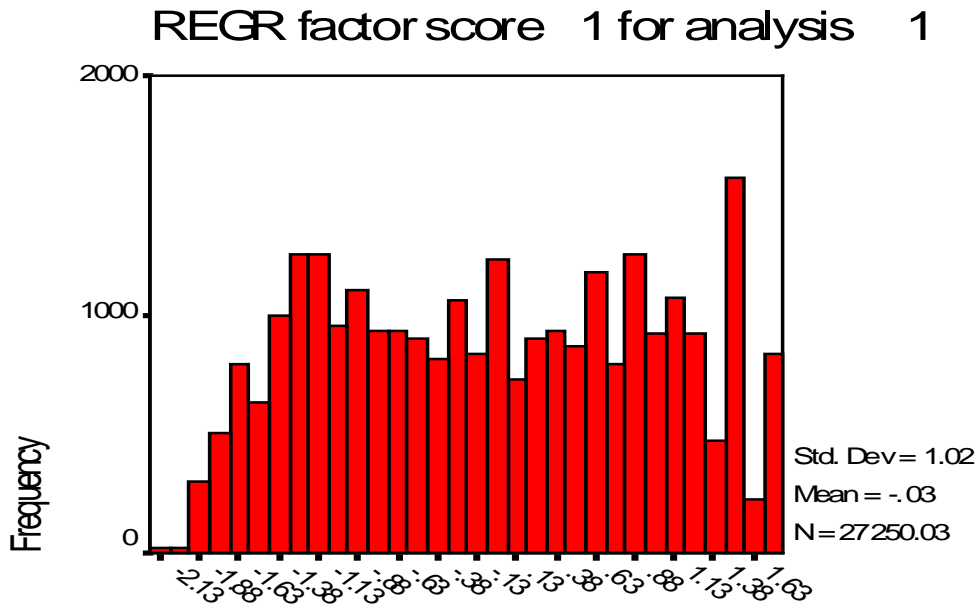
National score

### Statistics

REGR factor score 1 for analysis 1

N	Valid	27250
	Missing	0
Mean		-0.0309932
Median		-0.0334822
Std. Deviation		1.01806081
Minimum		-2.13135
Maximum		1.76733
Percentiles	20	-1.0958343
	40	-0.4067163
	60	0.3336913
	80	1.0311171

Histogram



REGR factor score 1 for analysis 1

Cases weighted by HMEMWT

## Report

Mean

	Wealth Index Quintiles					
	1	2	3	4	5	Total
if Água canalizada da rede pública	0.0346	0.1767	.2576	.5251	.7421	.3472
if water is Agua de garaffa	0.0000	0.0005	.0094	.0133	.1062	.0259
if gets water from a Chafariz	0.4393	0.5229	.5093	.3040	.0648	.3680
if gets water from Auto-tanque	0.0148	0.0243	.0466	.0738	.0464	.0412
if gets water from Cisterna	0.0846	0.0602	.0213	.0117	.0021	.0360
if gets water from poco	0.1082	0.0153	.0119	.0013	.0000	.0273
if gets water from nascente	.2701	.1188	.0440	.0165	.0018	.0902
if gets water from other source	0.0454	0.0743	0.0996	0.0541	0.0356	0.0618
if has pvt toilet - com retrete	0.022	0.1206	0.3201	0.7756	0.9488	0.4374
if uses shared toilet - com retrete	0.0064	0.0173	0.0373	0.0946	0.0412	0.0393
if has pvt toilet - sem retrete	0.0184	0.044	0.053	0.025	0.0025	0.0286
if uses shared toilet - sem retrete	0	0.0086	0.0053	0.0036	0.0009	0.0037
if has latrine	0.0255	0.0431	0.0498	0.0155	0.0018	0.0272
if uses the bush	0.9254	0.7506	0.5303	0.0783	0.0033	0.4576
if household has electricity	0.0293	0.4034	0.8899	0.9881	0.9995	0.662
if household has radio	0.5445	0.6663	0.8188	0.9314	0.9878	0.7898
if household has fridge	0.0062	0.122	0.5105	0.8772	0.9927	0.5017
if household has tv	0.0183	0.2805	0.7957	0.9745	0.9988	0.6135
if household has dvd	0.003	0.0758	0.3219	0.5955	0.9138	0.382
if household has car or truck	0.0022	0.0069	0.0318	0.0743	0.3711	0.0973
if household has phone	0.1575	0.3905	0.5533	0.8434	0.9271	0.5743
number of members per sleeping room	3.4031	3.172	3.0701	2.6261	2.043	2.8628
if uses charcoal for cooking (+12 cases wood +9 cases petrol)	0.9204	0.6406	0.3373	0.1225	0.0057	0.4053
if uses natural gas for cooking (+13 cases elec)	0.0772	0.3446	0.6558	0.8751	0.9936	0.5892
if uses other fuel for cooking	0.0014	0.0072	0.0062	0.0024	0.0007	0.0036
if roof is made of concrete	0.5151	0.8139	0.8414	0.8786	0.9828	0.8064
if roof is made of shingles	0.2894	0.138	0.1317	0.0922	0.0136	0.133
if roof is made of cement fiber	0.1195	0.0163	0.0141	0.0121	0.0012	0.0327
if roof is made of natural materials (straw)	0.044	0.0069	0.0039	0.0041	0	0.0118
if roof is made of tin, cartons, bags	0.0293	0.0145	0.0013	0	0	0.009
if has wall made of loose stone	0.1481	0.0561	0.0207	0.0142	0.0021	0.0482
if has wall made of cemented stone	0.3202	0.1967	0.1624	0.1397	0.0495	0.1737
if has wall made of cement block	0.2154	0.6039	0.7032	0.7724	0.9285	0.6447
if has stone+mud walling	0.2804	0.1162	0.0995	0.0487	0.0022	0.1094
if wall made of other materials	0.0183	0.002	0.0011	0.0023	0	0.0047
if floor is earth/mud/dung/sand	0.0616	0.0216	0.0111	0.0041	0	0.0197
if floor is of cement	0.8965	0.9388	0.9171	0.838	0.218	0.7615
if floor is of stone	0.0374	0.0155	0.0166	0.0045	0	0.0148
if has parquet/polished wood flooring	0.0031	0.0044	0.0054	0.0091	0.0158	0.0076
if flooring is of mosaic	0	0.0097	0.0464	0.1419	0.7649	0.1927