

USAID
FROM THE AMERICAN PEOPLE

Since 1984, **The Demographic and Health Surveys Program** has provided technical assistance to more than 400 surveys in over 90 countries. The DHS Program has earned a worldwide reputation for collecting and disseminating accurate, nationally representative data on topics such as fertility, family planning, maternal and child health, gender, HIV/AIDS, malaria, nutrition, and environmental health. Health information is collected through interviews with women and men, as well as collection of biological samples to test for malaria, vitamin deficiencies, and many other health conditions.



© ICF

The DHS Program implements Demographic and Health Surveys (DHS), Malaria Indicator Surveys (MIS), and Service Provision Assessment (SPA) surveys.

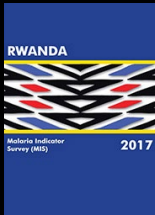
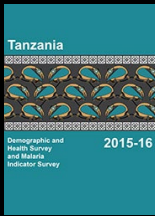
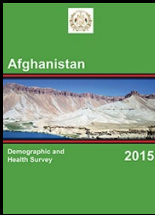
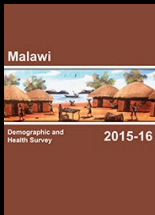
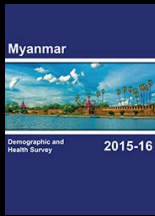
The DHS Program is implemented by ICF and partners Avenir Health, Blue Raster, The Johns Hopkins Center for Communication Programs (JHUCCP), EnCompass, PATH, and Vysnova.

The DHS Program also provides:

Capacity Strengthening: The DHS Program strengthens local skills on all areas of survey design, implementation, and data analysis through on-the-job mentoring, classroom training, curriculum development, eLearning, and blended approaches.

Increased Access to and Use of DHS Results: The DHS Program makes survey results and datasets available through web-based tools, a mobile app, print materials, videos, media training, and in-person and virtual workshops.

Data Analysis: The DHS Program publishes new Analytical Reports, Comparative Studies, Methodological Reports, Spatial Analysis Reports, Qualitative Research Studies, and Occasional Papers annually.



Connect with us!

DHSprogram.com - Free access to survey reports, [downloadable datasets](#), and survey documentation.

STATcompiler.com - Make tables, charts, and maps with your selected indicators and countries. Compare countries in a region and graph trends over time.

Mobile app - The DHS mobile app is available for free (search DHS Program in the [Mac App](#) or [Google Play](#) stores). Access key indicator data, maps, and basic survey information on your mobile device.

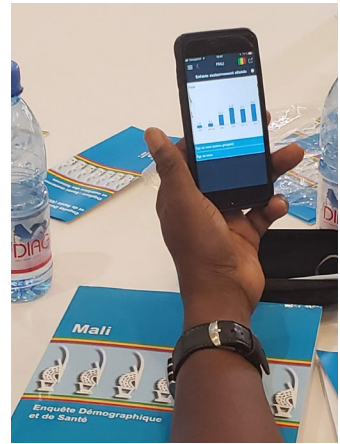
Social media - Follow us on [Facebook](#), [Twitter](#), [LinkedIn](#), and [YouTube](#) for announcements, tips, new data, and tutorial videos. The [DHS blog](#) provides an informal perspective on data collection and data use.

User Forum - Need help with analysis or interpretation of DHS Program data? Visit the User Forum to search FAQs, post your own question, or join a conversation. Register at [userforum.dhsprogram.com](#).

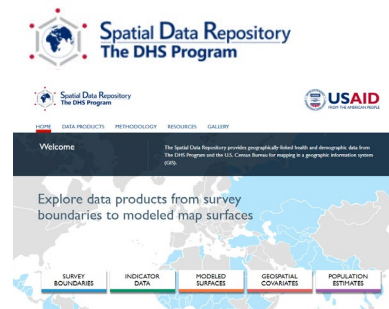
Learning Hub - Access online courses for independent learning and application-based workshop participation, communities of practice, and other training resources. [learning.dhsprogram.com](#)

GitHub - Open access to Stata, SPSS, and R code for DHS indicators for public use. [github.com/DHSprogram](#)

Spatial Data Repository - The SDR provides geographically-linked health and demographic data from The DHS Program and the U.S. Census Bureau for mapping in a geographic information system (GIS). [spatialdata.DHSprogram.com](#)



© ICF



The DHS Program, ICF
530 Gaither Road, Suite 500, Rockville, Maryland 20850, USA
301-407-6500
info@DHSprogram.com